

FRANKLINWH

**FranklinWH App
NBT Homeowners Setting Guide**



This document is intended for FranklinWH Home Power Homeowners in California. It provides instructions on enabling battery export for NBT (NEM 3.0) systems through the FranklinWH App.

Interconnection Application

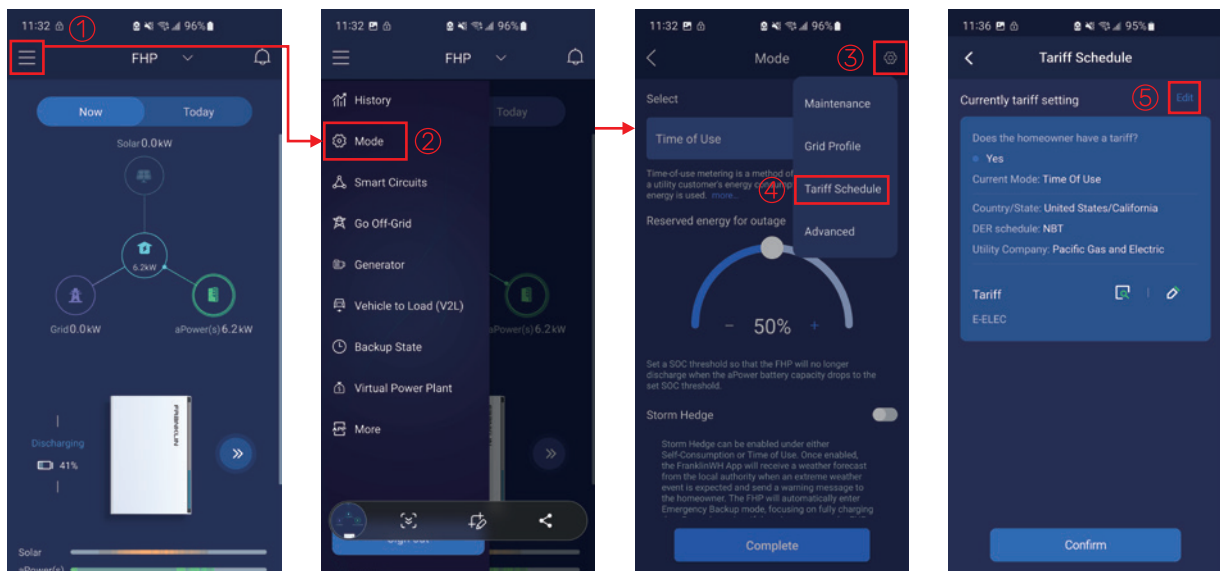
Before the commission, please confirm your interconnection application allows export. If your interconnection does not, then you will need to pay for an interconnection application modification fee to switch to export if you wish to export for periods of high Energy Export Credit (EEC).

INTERCONNECTION: Prior to receiving approval for Parallel Operation, the customer-generator must submit a completed utility application form and interconnection agreement as NBT-PS (as of NBT Paired Storage).

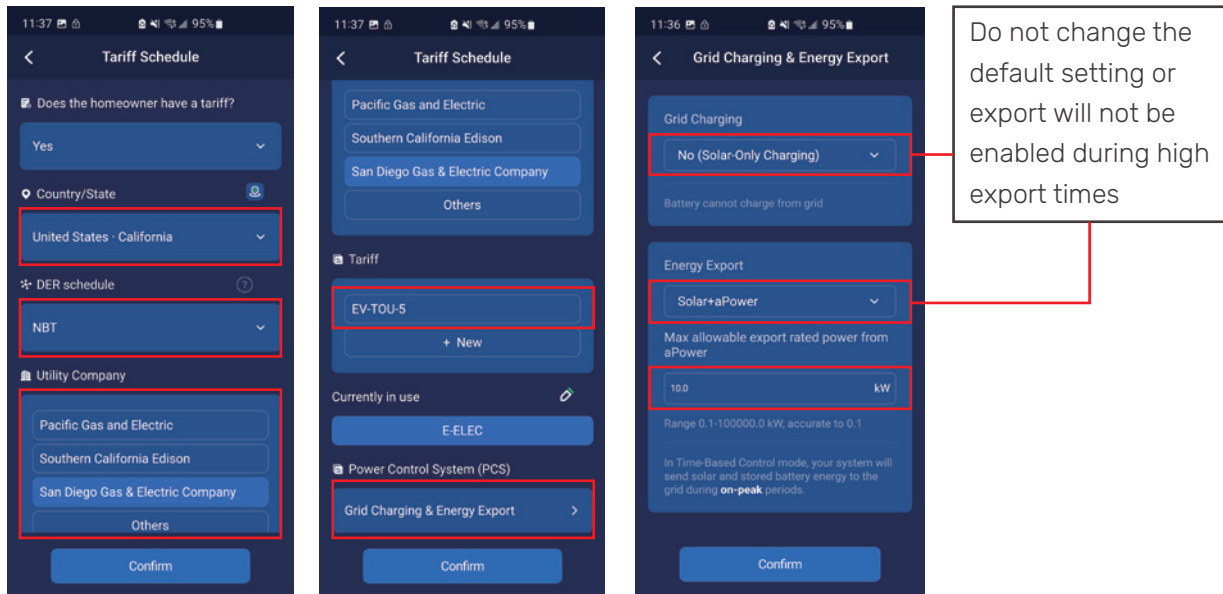
Net Billing Tariff configuration in the FranklinWH App

Follow the setting steps below:

Step 1. On the System page, select **Menu->Mode->Setting Gear on the right -> Tariff Schedule**



Step 2. On the **Tariff Schedule** page, use the settings below.



Procedure to configure the settings is below:

1. Does the Homeowner have a tariff. – Select **Yes**
2. Country/State: **United States – California**
3. DER schedule – **NBT**
4. Utility Company – **San Diego Gas & Electric Company** (Select the appropriate one)
5. Tariff – **EV-TOU-5** (Select the appropriate one)
6. Power Control System (PCS) – **Grid Charging & Energy Export**
7. Grid Charging– Default Option **No (Solar-Only Charging)**. Do not change this default setting otherwise export will not be enabled during high export compensation times.
8. Energy Export – **Solar + aPower**. Do not change this default setting otherwise export will not be enabled during high export compensation times.

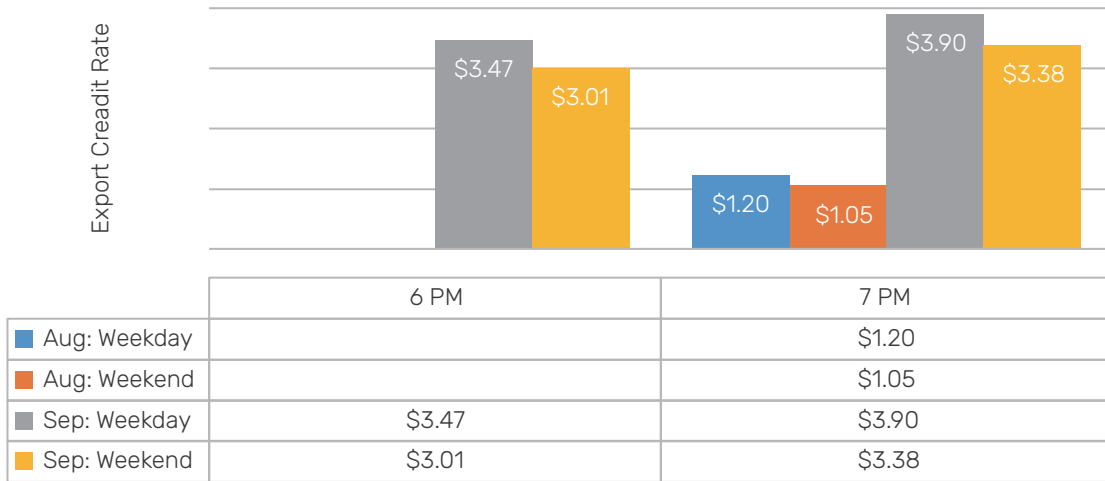
Max power of export to the grid. The setting for export power stick to the following rules:

- A) If total battery power (in case of more than 1 battery) < 10kW, then the maximized export power should be $\text{Export Power} = \text{PV Power} + \text{Battery Power}$.
- B) If total battery power (if more than 1 battery) > 10 kW, then the maximized export power should be $\text{Export Power} \leq \text{PV power} * 150\%$.

The FranklinWH Net Billing Program enables battery export to grid at the hours of the highest credit rate, when over \$0.74/kWh. Reminder the residential users shift the home load far away from the battery export hours for more credit.

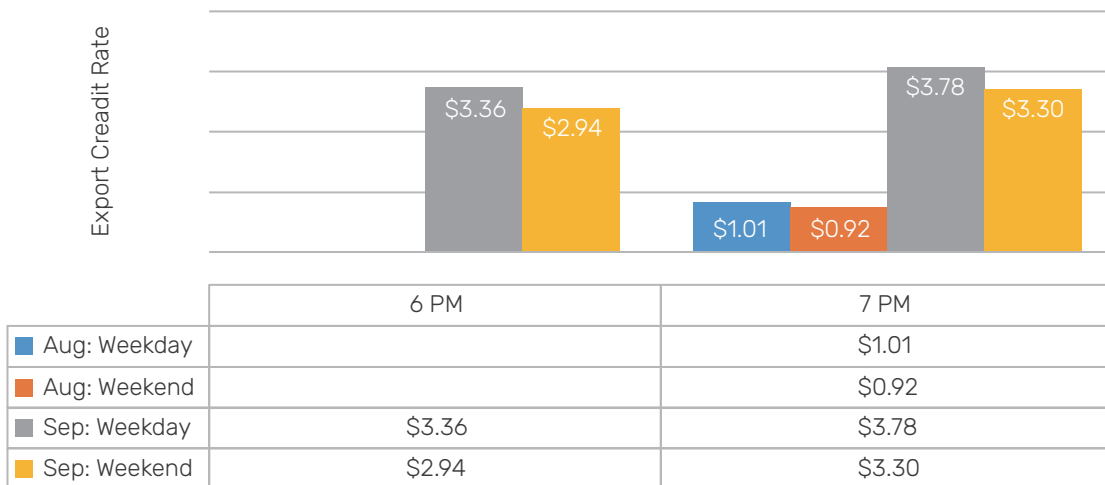
Battery export hours are built-in FranklinWH App automatically. Details are listed below.

PGE NBT 2024: Export Hours with High Compensation. The FranklinWH aPower(s) will be discharged at full power (5kW / unit, unless PCS limited) to the grid until SOC reaches 20%



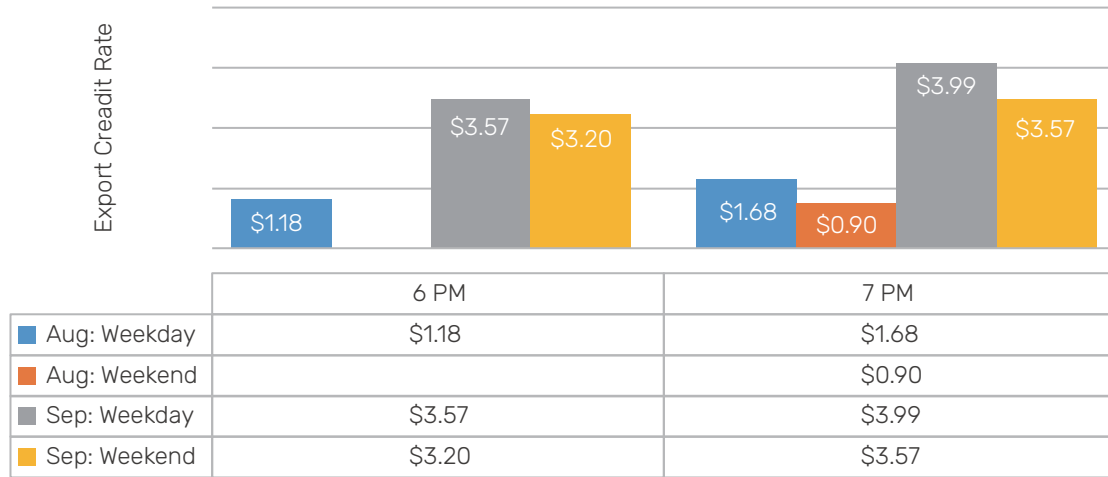
SCE NBT24: Battery Export Hours Slot with High Credit Rate

Franklin battery energy will be discharged with full power (5kW / unit, aggregation less the PCS limit) to the grid or / and home load until energy reserved 20% during below hours at August & September.



SSDG&E NBT24: Battery Export Hours Slot with High Credit Rate

Franklin battery energy will be discharged with full power(5kW / unit, agregation less the PCS limit) to the grid or / and home load until energy reserved 20% during below hours at August & Septembe



FRANKLINWH

FranklinWH Energy Storage Inc.

Website: www.franklinwh.com

Email: info@franklinwh.com

Telephone: +1 888-837-2655

Address: 1731 Technology Dr., Suite 530, San Jose, CA 95110